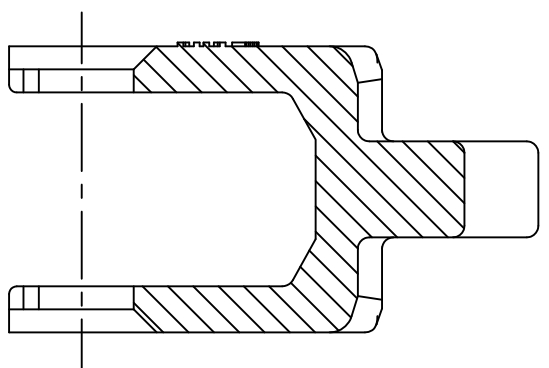
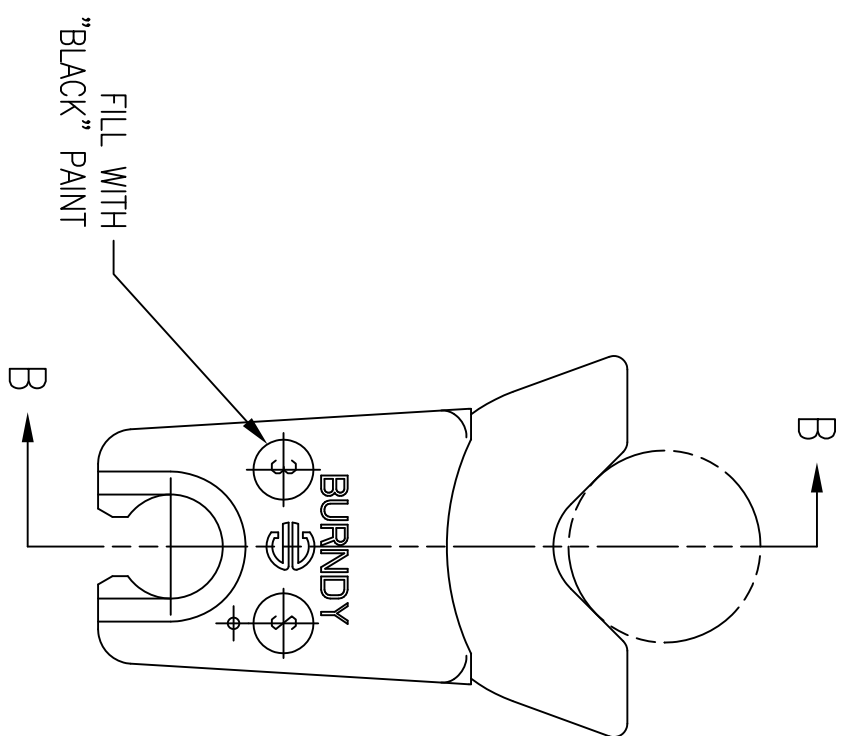
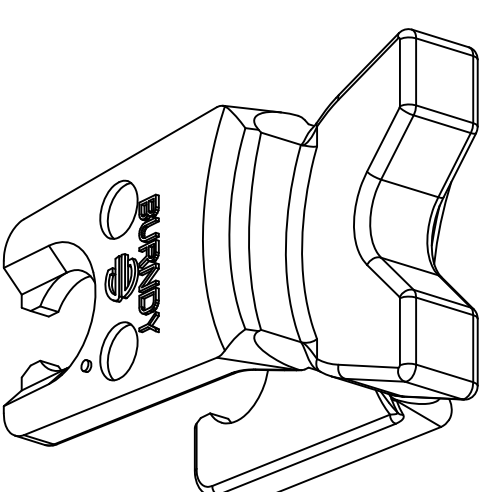
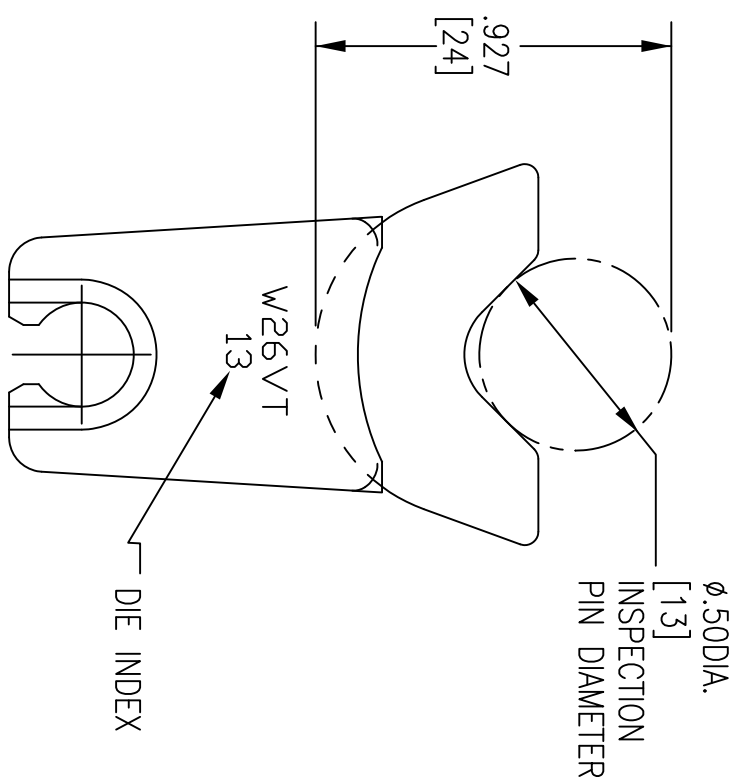


ITEM NO.	DESCRIPTION	QTY.
1	2/0, 13 INDEX DIE SET	1

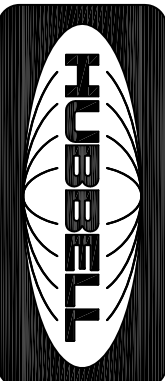
CATALOG NUMBER	DESCRIPTION
HW26VT	2/0, 13 INDEX DIE SET



SECTION B-B



- NOTES:
- DIMENSIONS IN BRACKETS [] ARE IN MILLIMETERS. ROUNDED OFF TO THE NEAREST MILLIMETER, UNLESS OTHERWISE NOTED, AND ARE FOR REFERENCE ONLY.
 - MATERIAL: STAINLESS STEEL
 - CATALOG NUMBER CONSIST OF TWO DIE HALVES.
 - FITS HPAT600U AND HMD7 COMPRESSION TOOLS.
 - SPECIFICATIONS SUBJECT TO CHANGE WITHOUT NOTICE.

1		17987	8/13/12	INITIAL RELEASE	CG	Created on AUTOCAD	
REV.	ECN	DATE	DESCRIPTION	CHG BY	APPD BY	DIMENSIONING AND TOLERANCE PER ANSI Y14.5M-1982 UNLESS OTHERWISE SPECIFIED, DIMENSIONS ARE IN INCHES (MM). TOLERANCES .XX = ±.01 (.25) .XXX = ±.005 (.127) .XXXX = ±.0025 (.0635) ANGLE TOL ±1°	
						PROJECT REFERENCE: 2011-041	 <p>Hubbell Premise Wiring HUBBELL INCORPORATED (Delaware) 23 CLARA DRIVE, SUITE 103 MVSSTIC, CT 06355</p>
						MATERIAL: SEE NOTES	
						DRAWN BY: C. GRIBBLE 8/13/12	
						CHECKED BY:	TITLE: DIE SET, 2/0, 13 INDEX W DIE SET FAMILY
						APPROVED BY:	SIZE C
						SCALE: 1/1	DRAWING NO. HWS14108C
						SHEET 1	REV. 1